

CSI CHOICE

CENTRAL PENNSYLVANIA CHAPTER

CONSTRUCTION SPECIFICATIONS INSTITUTE

Volume 42, No. 4

December 2005

TUESDAY, DECEMBER 13, 2005

Legal Issues – The Bilt-Rite Case

Dean F. Piermattei will talk about the recent case decision in the matter of Bilt-Rite Contractors, Inc. v. The Architectural Studios decided by the Pennsylvania Supreme Court on January 19, 2005. This case took a major step in changing the liability relationship between design professionals and contractors. The Court in that case determined that design professionals can be sued based on the negligent misrepresentations where professional specifications are false and/or misleading and result in damages to a contractor. Mr. Piermattei will discuss the traditional theory of liability against design professionals and how the Bilt-Rite decision impacted and extended liability against design professionals. He will discuss the rationale of the Court, and will discuss the potential expansion of this theory of liability against design professionals in the future.

RADISSON HOTEL

Camp Hill, PA

Attitude Adjustment starts at 6:00 p.m. Dinner starts at 6:30 p.m.

Cost - \$22.00 per person. (\$25.00 for reservations after 12/09.)

Students - \$11.00

MENU:

Stuffed Chicken Breast or Grilled Salmon, Caesar Salad.
Chef's Side Dish and Choice of Dessert, Coffee, Tea, Warm Rolls, Butter.

Low Fat or Special Dietary menus are available upon request.
See inside article FROM THE CHEF'S TABLE for further details

Reservations must be made to Maria Weber either by e-mail maria_weber@mcgraw-hill.com or by calling (717) 651-2890. Guests are welcome. YOU MUST CALL IN RESERVATIONS OR CANCEL STANDING RESERVATIONS by **FRIDAY, NOON, DECEMBER 9, 2005**. ALL NO-SHOWS WILL BE BILLED.

All members are welcome to attend the Board Meeting – 5:00 p.m.
At the RADISSON HOTEL ON December 13, 2005

All material MUST be in editor's hands no later than December 19, 2005 for publication in the January 2006 issue of Choice. Send to: Jeffery Lynch, 1475 Clover Road, Camp Hill, PA 17011, e-mail address: jl@murrayassoc.com.

The Construction Specifications Institute is a nation-wide nonprofit technical organization dedicated to the advancement of construction technology through communications, education, research and service. Founded in 1948, CSI provides a forum for architects, engineers, specification writers, contractors, suppliers and others in the industry.

Anyone who is concerned with construction specifications in any manner is invited to apply for membership. Contact Jake Burkholder, Ph: 717-564-6860.

The Central Pennsylvania Chapter Meets the Second Tuesday, Monthly except NO Meetings are held in July or August.

CHAPTER OFFICERS

Stewart C. Cluck President
Jeff Turicik President-Elect
Chris Atwood Vice President
John Cannon Secretary
Sidney J. Myers Recording Secretary
William Brightbill, FCSI Treasurer

DIRECTORS

Larry Saylor 2 yr.
Ed Metzger 2 yr.
Don Scruggs 2 yr.
Roger Herre 1 yr.
Jan Myers 1 yr.
Charlie Beauduy 1 yr.

ADVISOR

Jeff Smith

EDITOR

Jeffery M. Lynch

COMMITTEE CHAIRS

ACADEMIC AFFAIRS

John Cannon 805-3533

ADVERTISING

Jan Myers 238-4910

ARCHIVES

John Morgan 767-6868

AWARDS

Jeff Snyder 747-5404

BUDGET/ FINANCE

Charles Beauduy 763-7212

BYLAWS

Jeff Smith 657-1284

CERTIFICATION

Paul Brunski 263-8464

EDUCATION

Don Scruggs 263-8464

ELECTRONICS

Roger Herre 938-3644

EXHIBIT SHOW

Larry Saylor 737-0402

HOSPITALITY

Maria Weber 651-2890

LONG-RANGE PLANNING

Paul Brunski 263-8464

MEMBERSHIP

Jake Burkholder 564-6860

PROGRAM

Chris Atwood 233-4556

PUBLICITY

Jeff Turicik 763-6818

ROSTER

Rich Forsberg 761-8444

TECHNICAL

Ed Metzger 497-8631

INSTITUTE DIRECTORS

Brian Trimble, PE, CDT Charles Beauduy
(724) 776-1930 (717) 763-7212

CHAPTER ADDRESS

P.O. Box 3504
Harrisburg, PA 17105
TELEPHONES

Secretary (717) 805-3533
Treasurer (717) 540-9248
Editor (717) 234-2581
Ads (717) 238-4910

CHOICE STAFF

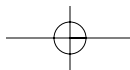
Jeffery M. Lynch Editor
Jan E. Myers Advertising
Rich Forsberg Roster

RESERVATIONS

Maria Weber
at (717) 651-2890
maria_weber@mcgraw-hill.com

Please Read Ads – They Support "Choice"

Chapter Website: <http://www.csicentralpennsylvania.org>



President's Message



The November meeting featured Sal Verrastro, who told us about the CSI Workshops in San Francisco covering Contract Administration, Product Representation and Specifications. A useful feature of the workshops is that one registration entitles you to attend any of the sessions. And at the end, the certification tests were given. Sal's presentation was very interesting and useful to many of us, and I know of several in attendance at our meeting who will make every effort to attend the next workshops in Nashville (tentatively) or wherever they are held. As soon as a location is determined CSI will post the location on the website at: www.csinet.org/education.

At the board meeting in November, Jan Myers presented her research on alternative plans to pay for meeting costs. She said that some other chapters include the dinner meeting costs with their annual membership fees. This spreads out the average meeting cost among all members and makes the meeting costs relatively low for those who attend regularly and adds some incentive for others to attend. The plusses and minuses are obvious. We discussed this option, but came to the conclusion that there are some risks with this that we can't afford. So, we'll stay the course and make incentives while controlling meeting costs other ways.

Our next meeting will be on December 13th at the Radisson. See you then.

Stewart C. Cluck
President

NOVEMBER 2005 BOARD MEETING MINUTES

The Board of Directors of the Central Pennsylvania Chapter of the Construction Specifications Institute met at the Radisson Hotel, Camp Hill, PA on November 8, 2005. President Cluck called the meeting to order at 5:08 p.m. Board members and committee chairs present were: Cluck, Turicik, Atwood, Cannon, S. Myers, Brightbill, Saylor, J. Myers, Herre, Beauduy, Lynch, Morgan, Brunski, Weber, Burkholder and Glace. Absent were: Scruggs, J. Smith, Snyder and Metzger. Sal Verrastro, our meeting's speaker was visiting.

President's Remarks: President Cluck asked for a review of the October minutes. The minutes were approved on a motion by Saylor and second by Brightbill.

OFFICERS' REPORTS:

President, President-Elect, Vice President, Secretary and Advisor: No reports.

Treasurer: Treasurer Brightbill presented the October Treasurer's report for review and acceptance. The report was accepted on a motion by Herre and second by Atwood.

Editor: Editor Lynch requested that articles for *Choice* be submitted by Monday, November 14, 2005.

COMMITTEE REPORTS:

Academic Affairs: No report.

Advertising: Chair J. Myers reported two checks were outstanding.

Archives, Awards, Budget/Finance and Bylaws: No reports.

Certification: Chair Brunski has all the instructors signed for the refresher course and all arrangements are made with HACC for the course examinations.

Education: Brunski reported Chair Scruggs is still making arrangements for the technical sessions that will be presented at the March Exhibit Show.

Electronics: Chair Herre will remove the Chapter's Directory from the web site until a method is found to restrict the Directory information to members only.

Exhibit Show: Chair Saylor has secured nine (9) exhibitors to date.

Hospitality: Chair Weber reported twenty-six (26) members and guests will attend tonight's meeting.

Long Range Planning: Chair Brunski expects to hold a meeting of the committee in December or January.

Membership: Chair Burkholder reports four (4) new members for this month.

Program: Chair Atwood listed the programs for most of the rest of the fiscal year; December - Legal Issues; January - Fire Doors; February - Joint Meeting with ASHRAE (on their meeting night and place) -



CIESCO, INC.
Service At A Competitive Price

State Capitol:
Harrisburg, PA 17110
(717) 232-5825

Nittany Lion Country:
State College, PA 16801
(814) 234-3928



Philadelphia Market:
Downingtown, PA 16801
(610) 518-2233

York County Area:
New Freedom, PA 17349
(717) 235-3324

Legal Issues; March - Exhibit Show; April - Tour of High Concrete Plant; May - Awards Night; June - Air Barriers.

Publicity: President-Elect Turicik has been in touch with the people who publish the *Central Pennsylvania Business Journal* in an attempt to secure some publicity for the chapter. Turicik was instructed by the Board to try negotiating with CPBJ to exchange a booth in the chapters Exhibit Show for an advertisement in CPBJ.

Roster: Chair Forsberg is to supply Editor Lynch with a notice for *Choice* concerning any changes in his/her listing in the chapter's Directory.

Technical: No report.

OLD BUSINESS:

J. Myers reported that Philadelphia Chapter (which had included their meals in with their dues billing) increased their dues billing by the cost of three (3) meals when they included the meals in their dues billing. (A word of caution was given by Sal Verrastro who stated that the Philadelphia Chapter had to cancel two of their meetings because they ran out of funds to pay for the meals.) J. Myers will check with other chapters to establish how their combined billing is working.

NEW BUSINESS:

None.

The meeting was adjourned at 6:01 p.m.

The next board meeting will be held Tuesday, December 13, 2005 at 5:00 p.m. at the Radisson Hotel, Camp Hill, PA.

Respectfully submitted,
Sidney J. Myers, PE, RA, CSI, CDT
Recording Secretary

ED METZGER

ARCHITECT / BUILDER REPRESENTATIVE

72 DEWALT DRIVE
MECHANICSBURG, PA 17050

emetzger@andersencorp.com

TEL • 717.497.8631 FAX • 717.791.9399

WINDOWS • DOORS
Andersen® 



WWW.SHERWIN-WILLIAMS.COM

The Sherwin-Williams Company

357 Northgate Drive, Suite #6
Warrendale, Pennsylvania 15086
(724) 933-1900 X 104
FAX: (724) 933-1990
e-mail: swgeist@aol.com

1 (800) 321-8194
Architectural Hotline

James Geist, CSI
Architectural Consultant

SPEAKERS BIO

Dean Piermattei is a partner at the law firm of Rhoads & Sinon LLP and has been with the firm since 1993. He is a partner in the litigation department and has handled various commercial litigation with an emphasis on construction disputes. He has represented owners, contractors and design professionals in various commercial projects both private and public. He is admitted to practice before the Pennsylvania Supreme Court, the United States District Court of the Middle District of Pennsylvania and the Eastern District of Pennsylvania as well as the Third Circuit Court of Appeals. He is a member of the Pennsylvania and New Jersey Bar Associations as well as the local County Bar Associations for Dauphin, Lancaster and Northumberland. He is a member of the Construction Specifications Institute and is involved with the Keystone Contractor's Association. He graduated from Temple University School of Law with a juris doctor degree (cum laude) in 1988, and from Pennsylvania State University with a B.S. in 1983. His can be contacted at (717) 231-6635, dpiermattei@rhoads-sinon.com.

FROM THE CHEF'S TABLE

The entree choices are Stuffed Chicken Breast or Grilled Salmon. Members should make an entrée selection when reservations are placed. (PLEASE NOTE THAT THE FIRST ENTRÉE LISTED WILL BE THE DEFAULT SELECTION IF NO CHOICE IS MADE.) In addition, we will try to accommodate special requests such as low fat or low sodium selections. A fresh fruit plate, instead of the Chef's Dessert Selection, is always available by request. Special request menu reservations should be made no later than the Friday prior to the Tuesday meeting. Please feel free to forward either your comments regarding your meal, or any suggestions that you feel could improve the CSICPC Dinner, to: maria_weber@mcgraw-hill.com.

Maria Weber
Hospitality Chair

ROSTER UPDATES

Please check your personal information in the new roster published last month. If you discover that your information is not correct, please notify Rich Forsberg, Roster Committee Chair 761-8444 or richf@hbglass.com.

Also, if your e-mail information has recently changed or you are currently not receiving chapter e-mail notifications, please notify the Chapter Electronics Committee, c/o Roger Herre at 938-3644 or rpherre@epix.net.



EverGuard
ROOFING SYSTEMS

U.S. INTEC
"System Solutions...
Even For Roofing Extremes"
Division of BMCA

GAF MATERIALS CORPORATION

203 Tomahawk Drive
P.O. Box 39
Conestoga, PA 17516
Office: 717-872-1496
Fax: 717-872-1436
Cell: 717-575-8999
E-mail: wkinney@gaf.com

William C. Kinney
Manufacturer's
Representative

DO SOMETHING
Exciting
WITH CERAMIC TILE

401 A Moulstown Road, Hanover, PA 17331
Howard Pryor - Director of Architectural Services
717-564-6860, Ext. 4213

Locations Also in Harrisburg, PA,
Dulles, VA, Linthicum, MD & Charlottesville, VA
CONESTOGATILE
www.conestogatile.com



Quality People means Quality Work

- Roofing & Roof Preventative Maintenance
- Concrete, Masonry Restoration & Repair
- Floor Wall & Deck Repairs & Overlays
- Sealants & Waterproofing



7464 Linglestown Rd.
Harrisburg, PA 17112
717-657-0212

www.houcks.com



LARRY E. SAYLOR, NCARB, AIA

133 South 32nd Street • Camp Hill, Pennsylvania 17011
717-737-0402 Fax: 717-737-0442
larry@bink.net • www.bink.net

Firestone
BUILDING PRODUCTS COMPANY

MATTHEW D. KNOUSE

Manufacturer's Representative

Performance Roofing Associates, Inc. TEL: (610) 594-6700
120 E. Uwchlan Avenue, Suite 202 (888) 594-6700
Exton, PA 19341 FAX: (610) 594-6707

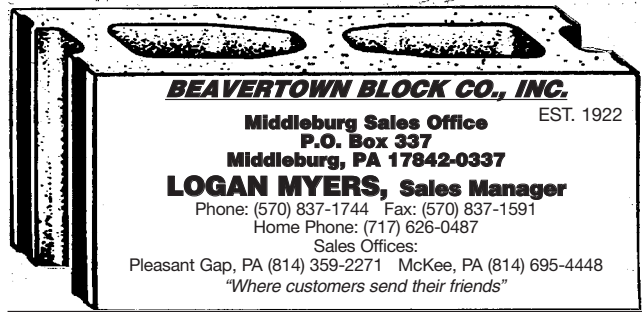
e-mail: mattk@performancerfg.com

A Complete Painting and Wall Covering Service



RALPH E. JONES, INC.
2240 Forster Street
P.O. Box 1933
Harrisburg, PA 17103
Phone 717-233-6444

JOHN PEIFFER



BEAVERTOWN BLOCK CO., INC.

Middleburg Sales Office EST. 1922
P.O. Box 337
Middleburg, PA 17842-0337

LOGAN MYERS, Sales Manager

Phone: (570) 837-1744 Fax: (570) 837-1591
Home Phone: (717) 626-0487

Sales Offices:

Pleasant Gap, PA (814) 359-2271 McKee, PA (814) 695-4448
"Where customers send their friends"

DEAN F. PIERMATTEI
ATTORNEY AT LAW

RHOADS & SINON LLP

OFFICE: (717) 233-5731
ONE SOUTH MARKET SQUARE DIRECT: (717) 231-6635
P.O. BOX 1146 FAX: (717) 231-6637
HARRISBURG, PA 17108-1146 E-MAIL: dpiermattei@rhoads-sinon.com

**Our community
commitments are
cast in concrete.**

HEMPT
HBI BROS., INC.

concrete • asphalt • paving • excavation



3501 North Sixth Street, Harrisburg, PA 17110
(717) 238-7331, Ext. 116 • Fax (717) 236-2972

Sales, Service & Installation Residential and Commercial



Division Product Specialists
Manufacturers' Representatives • Commercial Roofing Products

JIM KINGSBOROUGH

6 Wellington Court • Carlisle, PA 17013-4717 • 717-245-2696
Fax 717-243-1361 • roofspec2@aol.com



JOHN P. MORGAN, CSI
Regional Sales Manager

TRENWYTH INDUSTRIES, INC.

an Oldcastle® Company
P.O. Box 438
Emigsville, PA 17318
(800) 233-1924
(717) 767-6868
Fax: (717) 767-4023
Home: (717) 540-8069
Mobile: (717) 817-2036

TRENWYTH

EXPECTATIONS FOR A MANUFACTURER'S REPRESENTATIVE

Thank you to Rich Dropik for the informative letter written in last month's copy of *Choice*, "Expectations Of A Manufacturer's Representative."

As manufacturer's representatives, our companies charge us with getting our products specified in projects. This is a challenge. First, a relationship has to be forged with the design professional and general contractor's personnel who will be specifying the products for the project.

Let's face it, when a product representative walks through the door for the first time, most are thrown into the stereotype of a used car sales person. (Just a phrase. There are great used car sales people). Some believe that the reps just follow the project until the product is purchased, and then they bail out. We must all overcome this stereotype.

In today's world, all parties must work together as a team throughout the project from beginning of design to when the keys are turned over, and thereafter. In the past, the design professionals and general contractors knew about many products.

Nowadays, the manufacturers' portfolios have gotten so vast that it is impossible for them to keep current with the available products. The product representative must be viewed as a part of the team, and should possess all the qualities that were pointed out in Rich's letter.

The first step for a designer in forging a relationship with a product representative is to accept them as a valuable resource and not revert to the stereotype. Lay out a game plan and let them know how you would like them stay in touch with you. Some firms or offices like to be contacted once every few weeks, whereas other firms/offices prefer only to be notified or have their catalogues updated when new products come out.

Finally, what is needed in this busy world is to avoid wasting anyone's time. The essential thing is realizing that the product representative can be a valuable resource, and formulating a plan to maintain contact. It is important that all parties communicate, and appreciate where each one is coming from. The end result will be successful projects, with all parties on the same page. Thank you.

Ed Metzger, CSI
Technical Committee Chairman

Fall 05 / Winter 06 Calendar of Events

December 13 (Tues.)

Chapter Dinner Meeting & Program:
"Legal Issues – The Bilt-Rite Case"
presented by Dean Piermattei, Esquire, of
Rhoads & Sinon LLP

January 10 (Tues.)

Chapter Dinner Meeting & Program:
"Fire Doors – Code Requirements & How to Specify"

February 9 (Thurs.)

Joint Chapter Dinner Meeting & Program with
ASHRAE: **"Document Management & Discovery – How Documents and E-Mails are Used in Litigation,"** presented by Chris McDonald, Esquire. Meeting will be at the Holiday Inn, New Cumberland.

March 15 (Wed.)

31st Annual Chapter Exhibitors Show,
at the Radisson, Camp Hill, PA

April 11 (Tues.)

Chapter Lunch Meeting & Program:
Tour of High Concrete Structures,
Lancaster, PA

May 9 (Tues.)

Chapter Awards Banquet & Program

June 13 (Tues.)

Chapter Dinner Meeting & Program:
"Air Barriers," presented by David Altenhofen, AIA, Director of Architectural Technology for Kling (Philadelphia Office)

McCoys Bros Inc.
GENERAL CONTRACTOR
Creative!

- Commercial • Design-Build • Ecumenical
- Industrial • Institutional

1514 Commerce Ave., P.O. Box 7300 Carlisle, PA 17013
www.mccoysbrothers.com
717.241-2023

Quality
HARDWOOD FLOORS
CARPET- RESILIENT TILE

PVC - RUBBER FLOORING
RACQUETBALL/HANDBALL
COURTS

Slough Flooring, Inc. Since 1906

10 SOUTH 24TH STREET, HARRISBURG, PA 17103-2099
PHONE (717) 234-2664
FAX (717) 233-2819



404 S. 29th Street
Penbrook, PA 17103

PROFESSIONAL ROOFING CONTRACTORS

COMMERCIAL-INDUSTRIAL

Michael J. Bogar
President

717 232-0597
FAX 717 232-3163



Construction Sales Group, Inc.

Manufacturers' Representatives

Jim Harduk CSI, CDT

301 Oxford Valley Road
Suite 104A
Yardley, PA 19067

Ph: (215) 321-5300
Fax: (215) 321-5364
E-Mail: csgjim@aol.com

ARDEN Architectural
SPECIALTIES INC.



NELSON

PIPE
ROOFING



POLYDRAIN



**Strober Building
Supply Center, Inc.**

JAY MILLER
General Manager

3405 North 6th Street, Harrisburg, PA 17110
PH. 717-236-9425 • FAX 717-236-9413



**NOELKER AND HULL
ASSOCIATES, INC.**
ARCHITECTS AND
INTERIOR DESIGNERS

30 West King Street
Chambersburg, PA 17201
Phone: 717-263-8464
Fax: 717-263-6031
Email: info@noelkerhull.com
www.noelkerhull.com

**When you think of concrete
Think of Nitterhouse**

- Architectural Block
- NiCrete Brick
- Allan Block Retaining Wall
- Architectural Paving Stones
- Landscape products

Nitterhouse
masonry products, LLC

859 Cleveland Ave.
Chambersburg, PA 17201
717-267-4500
email: www.masonry@nitterhouse.com



W. R. MEADOWS OF PA

2100 MONROE ST.
P.O. BOX 7550
YORK, PA 17405
717-792-2627

Tremco Incorporated
17 Beechwood Lane, Hershey, PA 17033



800-851-4085 Voicemail
800-628-7501 Office
717-534-2961 FAX
717-439-0566 Mobile
e-mail: rkline17@aol.com

Randal W. Kline, CSI, CDT
Senior Field Advisor

An RPM Company www.tremcoroofing.com



Jeanie M. Crowl
Administrator

MASONRY CONTRACTORS ASSN.
OF CENTRAL PENNSYLVANIA

P.O. Box 318
Elysburg, PA 17824
1-800-577-6801
570/672-9616
fax: 570/672-9618

MASONRYCENTRALPA@aol.com

ANDERSEN WINDOWS, INC.



ED METZGER, CSI
Architectural Representative

72 Dewalt Dr., Mechanicsburg, PA 17050
Tel 717-791-9495 Fax 717-791-9399
www.andersenwindows.com

**International
Masonry Institute**



International Masonry Institute

Mid-Atlantic Region
300 Northpointe Circle, Suite 303
Seven Fields, PA 16046
Phone: 724-776-1930 Fax: 724-776-4963
1-800-IMI-0988
www.imiweb.org

CHAPTER CERTIFICATION STUDY COURSE

If you have been considering getting your CSI certification, now is the time to sign up. The certification programs - CDT, CCS, CCCA, and CCPR are nationally recognized and can give you an edge a down economy.

The study course is designed to assist candidates preparing for the examination(s) by offering a complete overview of CSI's Manual of Practice and the General Conditions publications by AIA (A201 or EJCDC 1910-8). The course will be offered as both a 1-credit course in HACC's Building Construction Technology curriculum and a non-credit course in HACC's continuing education program.

CHAPTER STUDY COURSE

Dates:

January 11 thru March 22, 2006
(Wednesday evenings for 10 weeks).

Time:

5:30 to 8:30 P.M.

Location:

HACC Campus, Harrisburg, PA

Cost:

\$87.50 for sponsoring districts
(Subject to change)



1600 North Second Street
Harrisburg, PA 17102-2499

Jeffery M. Lynch

**Director of
Business Development**

jlynch@murrayassoc.com

v 717.234.2581

d 717.234.1201

www.murrayassoc.com

MANAGING

SPACE
SOUND
SIGHT

Modernfold/Central PA

WILLIAM R. BRIGHTBILL FCSI, CDT

Project Manager

302 Lori Drive
Harrisburg, PA 17112

Office: 717-540-9248

Fax: 717-540-9249



1441 Stoneridge Drive, Middletown, PA 17057

717 / 930-0300

Registration:

Refer to www.hacc.edu for registration requirements. Registration for spring semester begins in November.

Textbook:

CSI Project Resource Manual

CERTIFICATION EXAMS:

Date:

Saturday March 25, 2006.

Locations:

Harrisburg Area Community College (HACC)

Registration:

Begins September 1, 2005 at \$150 for CSI members. Registration can be completed on line at www.csinet.org

If you have any questions, please call.

Paul Brunski CCS, CSI

Chapter Certification Chairman

TEST YOUR KNOWLEDGE

Test your knowledge of CSI's **The Project Resource Manual**, CSI Manual of Practice (5th Edition). Don't forget to sign up for the certification exam and study course at HACC starting in January. The following are sample questions which could be included in the April exam. (*Answers are on page 9.*)

- The Agreement is part of the:
 - Bidding Requirements
 - General Conditions
 - Specifications
 - Contract forms
- Which of the following is incorrect regarding specification illustration:
 - One illustration can help minimize extensive descriptions and prevent misunderstandings.
 - Require modification of the supplementary conditions.
 - Illustrations are restricted to the drawings only.
 - May require permission or copyright release.
- What is the correct section title and number for signage?
 - Section 10400 - Signage.
 - Section 10 14 00 - Identification Specialties.
 - Section 10 14 10 - Signage.
 - Section 10400 - Identification Specialties.
- How many modules are in the current UDS (Uniform Drawing Standards)?
 - 8.
 - 50.
 - 49.
 - 7
 - They are "chapters" not "modules".
- Project descriptions and outline specifications are legal binding documents.
 - True
 - False

If you're interested in ordering the new PRM contact Paul Brunski. The cost with the chapter discount is \$205 postage not included (reg. \$236 for members). Books will be delivered to the meetings or mailed using your Fed-X or UPS account.

To sign up for the class starting in January go to www.hacc.edu or refer to last month's *Choice* for more information.

Paul Brunski, AIA, CCS
Certification Chairman

Frank Gehry, James Glymph and Dennis Shelden Discuss Building Information Models At The 50th Annual CSI Show™ & Convention

ALEXANDRIA, Va. (Oct. 26, 2005) – Architect Frank Gehry, FAIA, and two of his colleagues will discuss Building Information Models (BIMS) during the opening general session of The 50th Annual CSI Show™ & Convention. Gehry will be joined by his partner James Glymph, FAIA, who has directed the development of many of the firm Gehry Partners' most significant projects in the United States and Europe, and Dennis R. Shelden, founder and Chief Technology Officer of Gehry Technologies, a building industry technology company.

Gehry's appearance is part of CSI's education program for the Show & Convention, which is focusing on BIMs as a solution more and more owners, designers, contractors and specifiers will be turning to in the future. CSI plans to offer several education sessions on the topic.

BIMs are computerized 3D and 2D models linked to databases that house the specifications, schedules, and other documents related to a project. They give designers a faster, richer design process, owners more budget control through predictions about the project's construction process, and contractors projects with fewer surprises. BIMs can generate schedules, coordinate documents, and automatically update drawings as new data is added. They are a natural step for anyone dedicated to construction documents that meet the "4 Cs" of CSI—clear, concise, complete and correct.

About Gehry

Frank Gehry is one of the most inventive and pioneering architects working today, and is also among the leaders in the development of building information modeling. His work includes the Experience Music Project (Seattle), the Guggenheim Museum Bilbao (Spain), and the Walt Disney Concert Hall (Los Angeles).

Among his many achievements, Gehry is a recipient of the Arnold W. Brunner Memorial Prize in Architecture from the American Academy of Arts and Letters, the National Medal of Arts, and the AIA's Gold Medal. He also holds the Pritzker Architecture Prize, perhaps the premiere accolade of the field, honoring "significant contributions to humanity and the built environment through the art of architecture."

About Glymph

James Glymph has directed the development of many of Gehry Partners' most significant projects.

He has contributed significantly to the growth and success of the firm, primarily by introducing the use of advanced CAD technology to the office and by guiding the integration of this technology into the firm's design process. Glymph brings to the firm many years of experience in the management, design and execution of a broad range of project types, and his special interest in the design and technical development of complex architectural projects. His work with Gehry includes the Experience Music Project and Walt Disney Concert Hall, as well as the Jerusalem Museum of Tolerance.

About Shelden

Shelden is a founder and Chief Technology Officer of Gehry Technologies, a building industry technology company formed in 2001 by the research and development team of Gehry Partners. Shelden joined Gehry Partners in 1997 and became director of the firm's computation efforts in 2000, where he was responsible for the management and strategic direction of the firm's technology infrastructure, project applications, process and software development initiatives, and research and development. Shelden spoke on BIMS and the value of MasterFormat 2004 Edition and OmniClass™ to the development of BIMS during an education session at the Show & Convention in 2005.

About The Annual CSI Show & Convention

The 50th Annual CSI Show & Convention and pre-convention events will take place March 28–April 1 in the Las Vegas Convention Center. In addition to more than 120 education sessions, CSI will present tours, exhibits, and other events so participants can network, explore new products, celebrate the Show & Convention's 50th anniversary, and see first-hand the unique architecture that has made Vegas world-famous. The Annual CSI Show & Convention is the only event covering the entire facility life cycle, and it attracts designers, engineers, specifiers, contractors, suppliers, facility managers, owners, and people who work with them. Access to all education programs is \$245 for CSI members (\$365 for non-members) who register before Jan. 17. Entrance to the Exhibit Hall only is free-of-charge. For more information or to register, visit www.thecsisshow.com or call 800-689-2900.

SYNTHETIC GYPSUM HELPS TO MEET RECYCLED MATERIAL REQUIREMENTS

Architects and specifiers challenged by requirements mandating the use of recycled building materials may be interested to learn that gypsum product manufacturers are relying increasingly on “synthetic” gypsum – a by-product of various manufacturing processes – to produce code-compliant gypsum board with a significant recycled content.

The vast majority of the synthetic gypsum used by the industry is a by-product of the process used to remove pollutants from the exhaust created by the burning of fossil fuels for power generation. “Were synthetic gypsum not used in the manufacture of gypsum board, it would be a useless material that would take up valuable space in landfills, explains Michael Gardner, Executive Director of the Gypsum Association. “In years past, gypsum board plants relied on a mixture of synthetic and natural ore to produce board. However, some modern plants can manufacture gypsum board almost entirely from synthetic gypsum.”

Gypsum plants also generate recycled gypsum

Another important source of recycled gypsum is production waste from gypsum board manufacturing plants themselves. Scattered throughout the United States and Canada, these plants reclaim usable gypsum by feeding production overruns or materials damaged during production back into the manufacturing cycle. In addition, selected plants can reclaim clean, new construction waste for reuse. Recycling isn't limited to just the gypsum board, nearly 100 percent of the fiber used in the production of gypsum board face and back paper comes from newsprint and post-consumer waste materials.

All gypsum-based products must be properly installed

Regardless of the origins of the gypsum used to manufacture gypsum board, these products – as well as other wall and ceiling framing components – must be installed in accordance with manufacturer's specifications if the wall and ceiling systems are to perform as intended.

“Gypsum board has an excellent track record of use that extends back almost 90 years,” says Gardner. “And when properly installed and maintained, it will provide decades of exceptional performance. To ensure satisfactory performance, provisions must be made to keep gypsum board dry throughout transit, storage, and application; gypsum board must not be applied over other building materials that exhibit conditions that are favorable to future damage or decay. In addition, the essential elements of a sound weather-tight building, such as the roof, sealants, and windows, must be properly maintained.”

Gypsum board products comply with ASTM standards

The quality of gypsum board produced from synthetic gypsum is the same as that manufactured

from natural gypsum. Gypsum board in the United States and Canada is manufactured to comply with ASTM Specification C 1396. This standard must be met whether the core is made of natural ore or synthetic gypsum.

In either case, gypsum board has many advantages over materials used in other wall systems. Its light weight – often one-fourth to one-third that of other materials – often allows the foundation and superstructure of a building to be constructed using significantly lighter or less massive materials. With many tested designs for non-load-bearing and load-bearing systems already available, most building assemblies that incorporate gypsum board do not require special engineering. Additionally, certain gypsum board systems can be successfully erected even when temperatures fall below freezing. Such systems allow increased productivity over systems that require favorable curing conditions.

Gypsum board is available from most retail, commercial suppliers

Gypsum board is readily available from retail and commercial suppliers and is consistent in its properties, regardless of manufacturer or region of origin. Gypsum board used in fire-resistance-rated systems is certified and labeled in accordance with the requirements of an independent organization – a claim not available for all materials. It also lends itself to an endless palette of finishes - including paint, wallcovering, texture materials, or faux finishes - and almost any conceivable look can be achieved on or applied to this most versatile of materials.

With such a long history of acceptable use, a large body of literature is available to facilitate the application of gypsum board, and code-recognized standards describing application methods and materials are easily obtained. Comprehensive catalogs of fire-resistive and sound-attenuating systems are also available.

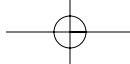
Gypsum board systems are easy to install

Gypsum board systems, including systems designed for fire-resistance, are also easily installed and can generally be repaired or modified without adverse impact on surrounding building construction. Different gypsum board materials can be used to provide a variety of flexible design options.

With gypsum board, how these products are installed and maintained really does make a performance difference. For more information on gypsum wallboard, log onto to the Gypsum Association web site at www.gypsum.org.



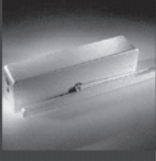
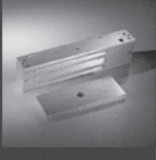
Article courtesy of the Al Paul Lefton Company of Philadelphia.

**ANSWERS FOR TEST YOUR
KNOWLEDGE:
d, c, b, a and b**



**Construction Specifications Institute
Central Pennsylvania Chapter
P.O. Box 3504
Harrisburg, PA 17105**

FIRST CLASS MAIL

Mortise and Cylindrical Locks	
Closer-Holder Release Devices	
Surface and Concealed Closers	
Pivots	
Exit Devices	
Coordinator Systems	
Low-Energy Operators	
Stops and Holders	
Electronic Access Control Hardware	



DORMA. The complete architectural hardware package.

- World's Largest Manufacturer of Commercial Door Controls
- First Door Closer Manufacturer to pass ANSI Grade 1 2,000,000 cycle test
- First Door and Hardware company to meet ISO 9000 criteria
- First exit device manufacturer to certify to 2,5000,000 cycles
- First closer manufacturer to pass UL10C and U.B.C. 7.2 for positive pressure without special options
- Unprecedented 25-year warranty for Grade 1 closers and 10-year warranty for Grade 1 exit devices
- 8900 Grade 1 closer certified to 10,000,000 cycles
- Complete family of mortise and cylindrical locks
- Prompt deliveries, fair prices, and elevated customer support
- State-of-the-art manufacturing facility in Pennsylvania utilizes computerized and robotic equipment

For more details, contact:
DORMA Architectural Hardware, Dorma Drive, Drawer AC, Reamstown, PA 17567-0411
Phone: 800-523-8483 • Fax: 800-274-9724 • e-mail: archdw@dorma-usa.com
Website: www.dorma-usa.com

©2003 DORMA Group North America. All rights reserved. DORMA is a registered trademark of DORMA Properties, Inc.

