

CSI CHOICE

CENTRAL PENNSYLVANIA CHAPTER CONSTRUCTION SPECIFICATIONS INSTITUTE

Volume 42, No. 5

January 2006

TUESDAY, JANUARY 10, 2006

Fire Doors: Code Requirements and How to Specify

Did you know that all new side-hinged or pivoted fire doors in Pennsylvania must now meet positive pressure test requirements? or that all new fire doors in fire-resistance-rated corridor walls must meet smoke-and-draft control assembly requirements? or that wood fire doors typically need to be further specified as Category "A" or "B"? or that sidelight glazing in a 20 minute rated door assembly must meet 3/4-hour fire-protection-rated glazing requirements? or that the fire-protection-rated glazing in a 1-hour temperature-rise rated door assembly is permitted to exceed 100 sq. in. in area if designed and built correctly? Are you befuddled and overwhelmed yet by just these five questions?

Our January program will examine the fire door requirements in Section 715 "Opening Protectives" of the IBC 2003 edition, try to make sense of these and other questions, and demonstrate guidelines on how to properly specify the fire doors for these requirements. This program will be a panel presentation by Terrence J. Naugle, RA of Great Valley Consultants, William Haley, AHC, CHC, with ASSA ABLOY Door Security Solutions, and Blake Whitcombe of McGrory Glass, Inc.

RADISSON HOTEL

Camp Hill, PA

Attitude Adjustment starts at 6:00 p.m. Dinner starts at 6:30 p.m.
Cost - \$22.00 per person (\$25.00 for reservations after 1/6/06) – Students - \$11.00

MENU:

Chicken and Mushrooms or Broiled Flounder, Minestrone Soup, Chef's Side Dish and Choice of Dessert, Coffee, Tea, Warm Rolls, Butter.

Low Fat or Special Dietary menus are available upon request.
See inside article FROM THE CHEF'S TABLE for further details

Reservations must be made to Maria Weber either by e-mail maria_weber@mcgraw-hill.com or by calling (717) 651-2890. Guests are welcome. YOU MUST CALL IN RESERVATIONS OR CANCEL STANDING RESERVATIONS by **FRIDAY, NOON, JANUARY 6**. ALL NO-SHOWS WILL BE BILLED.

All members are welcome to attend the Board Meeting – 5:00 p.m.
At the RADISSON HOTEL ON January 10, 2006

All material MUST be in editor's hands no later than DJanuary 16, 2006 for publication in the February 2006 issue of Choice. Send to: Jeffery Lynch, 1475 Clover Road, Camp Hill, PA 17011, e-mail address: jl@murrayassoc.com.

The Construction Specifications Institute is a nation-wide nonprofit technical organization dedicated to the advancement of construction technology through communications, education, research and service. Founded in 1948, CSI provides a forum for architects, engineers, specification writers, contractors, suppliers and others in the industry.

Anyone who is concerned with construction specifications in any manner is invited to apply for membership. Contact Jake Burkholder, Ph: 717-564-6860.

The Central Pennsylvania Chapter Meets the Second Tuesday, Monthly except NO Meetings are held in July or August.

- CHAPTER OFFICERS**
Stewart C. Cluck President
Jeff Turicik President-Elect
Chris Atwood Vice President
John Cannon Secretary
Sidney J. Myers Recording Secretary
William Brightbill, FCSI Treasurer

- DIRECTORS**
Larry Saylor 2 yr.
Ed Metzger 2 yr.
Don Scruggs 2 yr.
Roger Herre 1 yr.
Jan Myers 1 yr.
Charlie Beauduy 1 yr.

ADVISOR
Jeff Smith

EDITOR
Jeffery M. Lynch

- COMMITTEE CHAIRS**
ACADEMIC AFFAIRS
 John Cannon 805-3533
ADVERTISING
 Jan Myers 238-4910
ARCHIVES
 John Morgan 767-6868
AWARDS
 Jeff Snyder 747-5404
BUDGET/ FINANCE
 Charles Beauduy 763-7212
BYLAWS
 Jeff Smith 657-1284
CERTIFICATION
 Paul Brunski 263-8464
EDUCATION
 Don Scruggs 263-8464
ELECTRONICS
 Roger Herre 938-3644
EXHIBIT SHOW
 Larry Saylor 737-0402
HOSPITALITY
 Maria Weber 651-2890
LONG-RANGE PLANNING
 Paul Brunski 263-8464
MEMBERSHIP
 Jake Burkholder 564-6860
PROGRAM
 Chris Atwood 233-4556
PUBLICITY
 Jeff Turicik 763-6818
ROSTER
 Rich Forsberg 761-8444
TECHNICAL
 Ed Metzger 497-8631

- INSTITUTE DIRECTORS**
Brian Trimble, PE, CDT Charles Beauduy
 (724) 776-1930 (717) 763-7212

CHAPTER ADDRESS
 P.O. Box 3504
 Harrisburg, PA 17105
TELEPHONES

- Secretary** (717) 805-3533
Treasurer (717) 540-9248
Editor (717) 234-2581
Ads (717) 238-4910

CHOICE STAFF

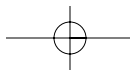
- Jeffery M. Lynch** Editor
Jan E. Myers Advertising
Rich Forsberg Roster

RESERVATIONS

- Maria Weber**
 at (717) 651-2890
 maria_weber@mcgraw-hill.com

Please Read Ads – They Support "Choice"

Chapter Website: <http://www.csicentralpennsylvania.org>



President's Message



This meeting was a presentation about the "Bilt Rite" case concerning the liability relationship between contractors and designers. It was presented by our own chapter member, Dean Piermattei, Esq. This was a particularly interesting meeting because Dean was part of the legal team who represented the Owner and had a very good insight on the implications for all contractors and designers. This program also boosted our attendance with several guests. Our thanks go to Modernfold this month for sponsoring the refreshments at our meeting.

Look forward to another meeting on legal issues when we jointly meet with ASHRAE for the February program: "How Documents and Emails are used in Litigation." Also, our certification education program begins in January. Contact Paul Brunski (pbrunski@nolkerhull.com) or log in to the HACC web site. Course sessions will be conducted by chapter members. Certification exams will be given in March. And one last news note – if you have never received a CSI lapel pin, let our membership chairman, Jake Burkholder know. He will be ordering new pins soon and all new members are entitled to receive one. See you at our next meeting, January 10th, at the Radisson.

Stewart C. Cluck
President

Featured Committee Chair



The Chapter Awards committee has the distinct pleasure of helping to recognize members and organizations for their efforts as related to

CSI. Nominations are requested from our membership throughout the year to award the efforts at the Chapter, Region and Institute level. For Region and Institute award submittals we like to submit at least 3 awards per year. We have proudly submitted and received the Outstanding Chapter Commendation each of the seven years it has been offered.

Selecting winners at our exhibit shows has been an interesting challenge because the personal representation, CSI formatted information, and the booth designs are usually all very good. We have so many great members that volunteer their time to CSI, it is important for us to recognize and show appreciation. I encourage members to nominate members for awards.

Our next annual Chapter Awards program will be held in May 2006. Chapter Award nominations are requested by March 31, 2006. A listing of awards is published in CHOICE prior to deadlines.

Jeff Snyder, CSI, CCPR
Awards Committee Chair

DECEMBER 2005 BOARD MEETING MINUTES

The Board of Directors of the Central Pennsylvania Chapter of the Construction Specifications Institute met at the Radisson Hotel, Camp Hill, PA on December 13, 2005. President Cluck called the meeting to order at 5:12 p.m. Board members and committee chairs present were: Cluck, Atwood, S. Myers, Brightbill, Saylor, Scruggs, J. Myers, Beauduy, Lynch, Morgan, Snyder, Brunski and Burkholder. Absent were: Turicik, Cannon, Herre, J. Smith, Weber, Forsberg and Metzger. Deck and Groff were visiting.

President's Remarks: President Cluck asked for a review of the November minutes. The minutes were approved on a motion by Beauduy and second by Saylor.

OFFICERS' REPORTS:

President, President-Elect, Vice President, Secretary and Advisor: No reports.

Treasurer: Treasurer Brightbill presented the November Treasurer's report for review and acceptance. The report was accepted on a motion by Beauduy and second by S. Myers.

Editor: Editor Lynch requested that articles for *Choice* be submitted by Monday, December 19, 2005.

COMMITTEE REPORTS:

Academic Affairs: No report.

Advertising: Chair J. Myers reported one check outstanding.

Archives: No report.

Awards: Chair Snyder requested that all committee chairmen keep their records current so that nominations for awards can be easily made.

Budget/Finance and Bylaws: No reports.

Certification: Chair Brunski held a meeting with the instructors and everything is ready to go for the refresher course at HACC.

Education: Chair Scruggs reported he is still making arrangements for the technical sessions that will be presented at the March Exhibit Show.

Electronics: No report.

Exhibit Show: Chair Saylor has secured 14 exhibitors to date.

Hospitality: No report.

Long Range Planning: Chair Brunski expects to hold a meeting of the committee on January 10, 2006 in the Radisson Lounge or other appropriate room.

Membership: Chair Burkholder reported that the chapter presently has 144 members.

Program: Chair Atwood stated that he, again, will try to secure Chuck Rhodes as the Awards Night speaker.

Publicity: President Cluck reported that Chair Turicik had tried to negotiate with the *Central Pennsylvania Business Journal* to exchange a both in the chapter's Exhibit Show for an ad in CPBJ. They were not receptive to an even trade. They wanted the difference in the cost of the ad and the booth. The consensus of the board members was to forget the whole thing.

Roster and Technical: No reports.

OLD BUSINESS:

J. Myers reported that the chapters she contacted are doing fine with their practice of including their meal cost in with their dues billings. She stated that the Philadelphia Chapter did cancel their November and December 2005 meetings and would have run out of money for meals if one of these meetings had not been cancelled.

No new information was presented on the formation of the Education Foundation.

ED METZGER

ARCHITECT / BUILDER REPRESENTATIVE

72 DEWALT DRIVE
MECHANICSBURG, PA 17050

emetzger@andersencorp.com
TEL • 717.497.8631 FAX • 717.791.9399

WINDOWS • DOORS
Andersen® 



WWW.SHERWIN-WILLIAMS.COM

The Sherwin-Williams Company
357 Northgate Drive, Suite #6
Warrendale, Pennsylvania 15086
(724) 933-1900 X 104
FAX: (724) 933-1990
e-mail: swgeist@aol.com

1 (800) 321-8194
Architectural Hotline

James Geist, CSI
Architectural Consultant

NEW BUSINESS:

None.

The meeting was adjourned at 5:45 p.m.

The next board meeting will be held Tuesday, January 10, 2006 at 5:00 p.m. at the Radisson Hotel, Camp Hill, PA.

Respectfully submitted,
Sidney J. Myers, PE, RA, CSI, CDT
Recording Secretary

FROM THE CHEF'S TABLE

The entrée choices are Chicken and Mushrooms or Broiled Flounder. Members should make an entrée selection when reservations are placed. (PLEASE NOTE THAT THE FIRST ENTRÉE LISTED WILL BE THE DEFAULT SELECTION IF NO CHOICE IS MADE) In addition, we will try to accommodate special requests such as low fat or low sodium selections. A fresh fruit plate, instead of the Chef's Dessert Selection, is always available by request. Special request menu reservations should be made no later than the Friday prior to the Tuesday meeting.

Please feel free to forward either your comments regarding your meal, or any suggestions that you feel could improve the CSICPC Dinner, to: maria.weber@mcgraw-hill.com.

Maria Weber
Hospitality Chair

MARCH 15, 2006 SEMINAR SERIES

The Chapter Education Committee has four seminars planned for the March 15, 2006 Exhibitor's Show to be held in Camp Hill. There will be a two hour program in the morning and three one hour programs in the afternoon as listed below:

Building Information Modeling (morning)

Presented by Mr. Lew Reed, Bentley Systems, Inc.

Documentation Practices to Guide Construction Teams in LEED Compliance

Presented by the Green Building Association of Central PA

The Future is Here: Commercial Glazing Codes and It's Affects On Design Applications

Presented by Mr. Ron Pulambo, Acurlite Structural Skylights

Planning & Design Considerations for Segmental Retaining Walls

This seminar is presented in conjunction with PA Concrete Masonry Association.

Complete seminar descriptions and additional details will be provided in next months Choice.

Don Scruggs, CSI, CCCA
Education Chairman



EverGuard
ROOFING SYSTEMS

U.S. INTEC
"System Solutions...
Even For Roofing Extremes"
Division of BMCA

GAF MATERIALS CORPORATION

203 Tomahawk Drive
P.O. Box 39
Conestoga, PA 17516
Office: 717-872-1496
Fax: 717-872-1436
Cell: 717-575-8999
E-mail: wkinney@gaf.com

William C. Kinney
Manufacturer's
Representative

DO SOMETHING
Exciting
WITH CERAMIC TILE

401 A Moulstown Road, Hanover, PA 17331
Howard Pryor - Director of Architectural Services
717-564-6860, Ext. 4213

Locations Also in Harrisburg, PA,
Dulles, VA, Linthicum, MD & Charlottesville, VA
CONESTOGATILE
www.conestogatile.com



Quality People means Quality Work

- Roofing & Roof Preventative Maintenance
- Concrete, Masonry Restoration & Repair
- Floor Wall & Deck Repairs & Overlays
- Sealants & Waterproofing



7464 Linglestown Rd.
Harrisburg, PA 17112
717-657-0212

www.houcks.com



LARRY E. SAYLOR, NCARB, AIA

133 South 32nd Street • Camp Hill, Pennsylvania 17011
717-737-0402
larry@bink.net • www.bink.net

Firestone
BUILDING PRODUCTS COMPANY

MATTHEW D. KNOUSE

Manufacturer's Representative

Performance Roofing Associates, Inc. TEL: (610) 594-6700
120 E. Uwchlan Avenue, Suite 202 (888) 594-6700
Exton, PA 19341 FAX: (610) 594-6707

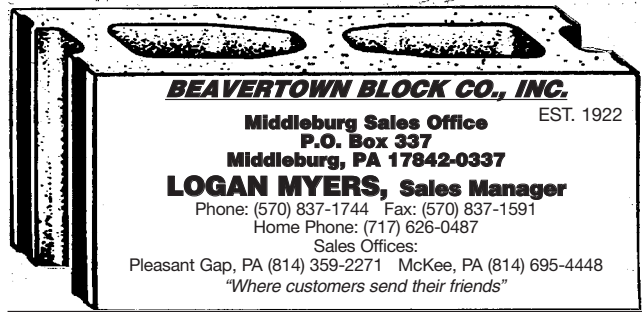
e-mail: mattk@performancerfg.com

A Complete Painting and Wall Covering Service



RALPH E. JONES, INC.
2240 Forster Street
P.O. Box 1933
Harrisburg, PA 17103
Phone 717-233-6444

JOHN PEIFFER



BEAVERTOWN BLOCK CO., INC.

Middleburg Sales Office
P.O. Box 337
Middleburg, PA 17842-0337

EST. 1922

LOGAN MYERS, Sales Manager

Phone: (570) 837-1744 Fax: (570) 837-1591
Home Phone: (717) 626-0487

Sales Offices:

Pleasant Gap, PA (814) 359-2271 McKee, PA (814) 695-4448
"Where customers send their friends"

DEAN F. PIERMATTEI
ATTORNEY AT LAW

RHOADS & SINON LLP

OFFICE: (717) 233-5731
ONE SOUTH MARKET SQUARE DIRECT: (717) 231-6635
P.O. BOX 1146 FAX: (717) 231-6637
HARRISBURG, PA 17108-1146 E-MAIL: dpiermattei@rhoads-sinon.com

**Our community
commitments are
cast in concrete.**

HEMPT
BROS., INC.

concrete • asphalt • paving • excavation



3501 North Sixth Street, Harrisburg, PA 17110
(717) 238-7331, Ext. 116 • Fax (717) 236-2972

Sales, Service & Installation Residential and Commercial



Division Product Specialists
Manufacturers' Representatives • Commercial Roofing Products

JIM KINGSBOROUGH

6 Wellington Court • Carlisle, PA 17013-4717 • 717-245-2696
Fax 717-243-1361 • roofspec2@aol.com



JOHN P. MORGAN, CSI
Regional Sales Manager

TRENWYTH INDUSTRIES, INC.

an Oldcastle® Company
P.O. Box 438
Emigsville, PA 17318
(800) 233-1924
(717) 767-6868
Fax: (717) 767-4023
Home: (717) 540-8069
Mobile: (717) 817-2036

TRENWYTH

Winter / Spring 06 Calendar of Events

January 10 (Tues.)

Chapter Dinner Meeting & Program:
"Fire Doors – Code Requirements & How to Specify"

February 9 (Thurs.)

Joint Chapter Dinner Meeting & Program with ASHRAE: **"Document Management & Discovery – How Documents and E-Mails are Used in Litigation,"** presented by Chris McDonald, Esquire. Meeting will be at the Holiday Inn, New Cumberland.

March 15 (Wed.)

31st Annual Chapter Exhibitors Show,
 at the Radisson, Camp Hill, PA

March 28-April 1

50th Annual CSI Show & Convention
 Las Vegas, NV

April 11 (Tues.)

Chapter Lunch Meeting & Program:
Tour of High Concrete Structures,
 Lancaster, PA

May 9 (Tues.)

Chapter Awards Banquet & Program

June 13 (Tues.)

Chapter Dinner Meeting & Program:
"Air Barriers," presented by David Altenhofen, AIA, Director of Architectural Technology for Kling (Philadelphia Office)

ROSTER UPDATES

Please check your personal information in the new roster published in November. If you discover that your information is not correct, please notify Rich Forsberg, Roster Committee Chair at 761-8444 or jefturicik@ykk-api.com.

Also, if your e-mail information has recently changed or you are currently not receiving chapter e-mail notifications, please notify the Chapter Electronics Committee, c/o Roger Herre at 938-3644 or rpherre@epix.net.

DON'T FORGET TO VOTE!

The following members have been nominated to serve on CSI's Board of Directors in FY 07 (July 1, 2006, to June 30, 2007). CSI will mail instructions for casting paper and electronic ballots to all members in late January. And whether or not you find the time to vote, a new Board is going to be elected – so make sure you vote before the **March 1** deadline.

To help you make your decision this year, in late December CSI posted information about the candidates and the election at www.csinet.org/election (go to www.csinet.org, click "forums," then click "CSI Election 2006"). Members are invited to read the biographies candidates have written about themselves and to post questions for the candidates.

Visit www.csinet.org/election for more information about the candidates and voting. Or:

- Go to www.csinet.org
- Click "Forums"
- Then click "CSI Elections 2006"

Don't forget – the deadline for casting your ballot is **March 1**.

Got a question or a comment? CSI Communications Manager Joy Davis can be reached at jdavis@csinet.org or (800) 689-2900.

McCoys Bros Inc.
 GENERAL CONTRACTOR
Creative!

- Commercial • Design-Build • Ecumenical
- Industrial • Institutional

1514 Commerce Ave., P.O. Box 7300 Carlisle, PA 17013
www.mccoysbrothers.com
717.241-2023



CIESCO, INC.
 Service At A Competitive Price



State Capitol:
 Harrisburg, PA 17110
 (717) 232-5825

Nittany Lion Country:
 State College, PA 16801
 (814) 234-3928

Philadelphia Market:
 Downingtown, PA 17801
 (610) 518-2233

York County Area:
 New Freedom, PA 17349
 (717) 235-3324

Quality
 HARDWOOD FLOORS
 CARPET- RESILIENT TILE

PVC - RUBBER FLOORING
 RACQUETBALL/HANDBALL
 COURTS

Slough Flooring, Inc. Since 1906

10 SOUTH 24TH STREET, HARRISBURG, PA 17103-2099
 PHONE (717) 234-2664
 FAX (717) 233-2819



404 S. 29th Street
Penbrook, PA 17103

PROFESSIONAL ROOFING CONTRACTORS

COMMERCIAL-INDUSTRIAL

Michael J. Bogar
President

717 232-0597
FAX 717 232-3163



Construction Sales Group, Inc.

Manufacturers' Representatives

Jim Harduk CSI, CDT

301 Oxford Valley Road
Suite 104A
Yardley, PA 19067

Ph: (215) 321-5300
Fax: (215) 321-5364
E-Mail: csgjim@aol.com

ARDEN Architectural
SPECIALTIES INC.



NELSON

PIRE

NEOGARD

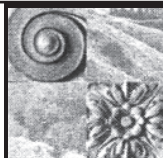
POLYDRAIN



**Strober Building
Supply Center, Inc.**

JAY MILLER
General Manager

3405 North 6th Street, Harrisburg, PA 17110
PH. 717-236-9425 • FAX 717-236-9413



**NOELKER AND HULL
ASSOCIATES, INC.**

ARCHITECTS AND
INTERIOR DESIGNERS

30 West King Street
Chambersburg, PA 17201
Phone: 717-263-8464
Fax: 717-263-6031
Email: info@noelkerhull.com
www.noelkerhull.com

**When you think of concrete
Think of Nitterhouse**

- Architectural Block
- NiCrete Brick
- Allan Block Retaining Wall
- Architectural Paving Stones
- Landscape products

Nitterhouse
masonry products, LLC

859 Cleveland Ave.
Chambersburg, PA 17201
717-267-4500
email: www.masonry@nitterhouse.com



W. R. MEADOWS OF PA

2100 MONROE ST.
P.O. BOX 7550
YORK, PA 17405
717-792-2627

Contact Dick Hoke

Tremco Incorporated
17 Beechwood Lane, Hershey, PA 17033



800-851-4085 Voicemail
800-628-7501 Office
717-534-2961 FAX
717-439-0566 Mobile
e-mail: rkline17@aol.com

Randal W. Kline, CSI, CDT
Senior Field Advisor

An RPM Company www.tremcoroofing.com



Jeanie M. Crowl
Administrator

**MASONRY CONTRACTORS ASSN.
OF CENTRAL PENNSYLVANIA**

P.O. Box 318
Elysburg, PA 17824
1-800-577-6801
570/672-9616
fax: 570/672-9618

MASONRYCENTRALPA@aol.com

ANDERSEN WINDOWS, INC.

ED METZGER, CSI
Architectural Representative

72 Dewalt Dr., Mechanicsburg, PA 17050
Tel 717-791-9495 Fax 717-791-9399
www.andersenwindows.com

**International
Masonry Institute**



International Masonry Institute

Mid-Atlantic Region
300 Northpointe Circle, Suite 303
Seven Fields, PA 16046
Phone: 724-776-1930 Fax: 724-776-4963
1-800-IMI-0988
www.imiweb.org

THE 50TH ANNUAL CSI SHOW™ & CONVENTION BY THE NUMBERS

by Joy Davis, CSI Communications Manager

One time an MIT student told me that going to his school was like trying to take a sip from a fire hose. I know exactly what he means. Every year I go to The Annual CSI Show™ & Convention, and every year I get metaphorically drenched. By the end of the Show & Convention my notebooks are crammed with information and ideas presented by speakers, my pockets are stuffed with business cards, and I fly home wondering how any CSI member can skip this event. For those of you who've never been, I can only describe the Show & Convention as the most valuable week in CSI's year. If you're not going, you're not getting everything to which your membership entitles you.

CSI will host The 50th Annual CSI Show & Convention in Las Vegas, March 29–April 1. When you make your decision about attending, include these numbers in your math:

- **120+ education sessions.** Most qualify for continuing education credit, so you can get all the credit you need in just FOUR DAYS. The topics this year include building information models (BIMs), green building, legal issues and other issues that affect you every day. Arrive a day early, and you can attend the MasterFormat™ Accredited Instructor program or CSI University on March 28.

- **15 technical tours that also qualify for continuing education credit.** Some tours include tickets to hit shows in Vegas. Others focus on construction innovations taking place in this, the fastest growing construction market in the nation. Most will be guided by the architects, contractors and owners who worked on these projects.

- **Hundreds of exhibitors.** Experienced show participants tour the exhibit hall with a map in one hand and a list of exhibitors in the other—it's the only way to see everything that you want to see in an exhibit hall of this size.

- **Two tradeshow.** The CSI Show will again co-locate with The Masonry Showcase™, and registering for the Show & Convention will again entitle you to attend education sessions and visit the exhibit halls of both shows.

- **A couple of thousand members,** any one of which could be your next boss, could fill the next hole in your staff, could be your next contractor or consultant, or could suggest the solution that resolves the crisis that is threatening your next project's bottom line.

- **Three expert speakers at the Opening General Session.** Architect Frank Gehry, FAIA, and two of his colleagues will discuss Building Information Modeling (BIM) during the Opening General Session on Wednesday, March 29, at the Show & Convention headquarters hotel, the MGM Grand. Gehry will be joined by his partner James Glymph, FAIA, who has directed the development of many of the firm Gehry Partners' most significant projects in the United States and Europe, and Dennis R. Shelden, founder and Chief Technology Officer of Gehry Technologies, a building industry technology company. Never before has this slate of speakers been together to speak on this topic, and they may never do it again. Don't miss this!

If you decide to take the plunge and attend the Show & Convention, the next number you need to think about is this: **Jan. 17.** CSI members who register by that date get the Early Bird Discount as well as the member discount, reducing the cost of the complete registration package to \$245.

I suggest you register and book your hotel room well before Jan. 17, however. Las Vegas is a busy town, and will host several citywide events in March. An affordable hotel room may be hard to come by if you delay.

The headquarters hotel for the Show & Convention this year is the MGM Grand. That means many of our membership events will be held in this world-class establishment—including the Honors & Awards Gala (Saturday, April 1) and CSI's poolside welcome reception sponsored by GRACE Construction (Wednesday, March 29th).

Visit www.theccsishow.com for more information about The 50th Annual CSI Show & Convention. I look forward to seeing you in Vegas.

Got a question or a comment? CSI Communications Manager Joy Davis can be reached at jdavis@csinet.org or (800) 689-2900.

MANAGING

SPACE
SOUND
SIGHT

 **Modernfold/Central PA**

WILLIAM R. BRIGHTBILL FCSI, CDT

Project Manager

302 Lori Drive
Harrisburg, PA 17112

Office: 717-540-9248

Fax: 717-540-9249

EXTERIOR / INTERIOR SYSTEMS CONTRACTOR
NOVINGERS INC.

1441 Stoneridge Drive, Middletown, PA 17057

717 / 930-0300


MURRAY ASSOCIATES ARCHITECTS, P.C.

1600 North Second Street
Harrisburg, PA 17102-2499

Jeffery M. Lynch

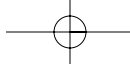
*Director of
Business Development*

jlynch@murrayassoc.com

v 717.234.2581

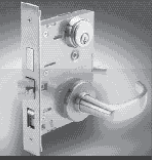
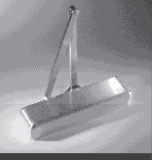
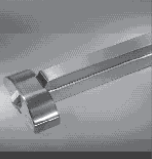
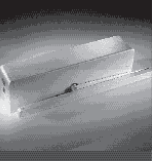
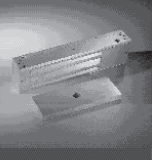
d 717.234.1201

www.murrayassoc.com



**Construction Specifications Institute
Central Pennsylvania Chapter
P.O. Box 3504
Harrisburg, PA 17105**

FIRST CLASS MAIL

Mortise and Cylindrical Locks	
Closer-Holder Release Devices	
Surface and Concealed Closers	
Pivots	
Exit Devices	
Coordinator Systems	
Low-Energy Operators	
Stops and Holders	
Electronic Access Control Hardware	



DORMA. The complete architectural hardware package.

- World's Largest Manufacturer of Commercial Door Controls
- First Door Closer Manufacturer to pass ANSI Grade 1 2,000,000 cycle test
- First Door and Hardware company to meet ISO 9000 criteria
- First exit device manufacturer to certify to 2,500,000 cycles
- First closer manufacturer to pass UL10C and U.B.C. 7.2 for positive pressure without special options
- Unprecedented 25-year warranty for Grade 1 closers and 10-year warranty for Grade 1 exit devices
- 8900 Grade 1 closer certified to 10,000,000 cycles
- Complete family of mortise and cylindrical locks
- Prompt deliveries, fair prices, and elevated customer support
- State-of-the-art manufacturing facility in Pennsylvania utilizes computerized and robotic equipment

For more details, contact:
DORMA Architectural Hardware, Dorma Drive, Drawer AC, Reamstown, PA 17567-0411
Phone: 800-523-8483 • Fax: 800-274-9724 • e-mail: archdw@dorma-usa.com
Website: www.dorma-usa.com

©2003 DORMA Group North America. All rights reserved. DORMA is a registered trademark of DORMA Properties, Inc.

